

## Linssen Grand Sturdy 40.0 AC »MARIGO«

<b>Model:</b>	<b>Linssen Grand Sturdy 40.0 AC</b>
<b>Price:</b>	<b>499.000 € VAT PAID GER</b>
<b>Year / 1<sup>st</sup> registration</b>	<b>2019</b>
<b>Location:</b>	<b>San Gorgio de NAGARO</b>
<b>Engine / Generator hours:</b>	<b>1.200 engine-h // Generator: 337 h</b>
<b>Flag:</b>	<b>GER</b>
<b>Engines:</b>	<b>2 X VOLVO D3 110</b>
<b>Fuel // Water capacity</b>	<b>Fuel capacity 750 l // Water capacity 440 l</b>
<b>Layout:</b>	<b>3 cabins 2 toilets</b>
<b>Interior:</b>	<b>Grey Oak</b>

BASIC DATA		
01010.05	Construction	: SPH (Softchine Prestressed Hull)
	Bottom/hull/ decks/superstructure	: 6/5/4/4 mm.
	Weight/displacement	: 17.000kg/17m <sup>3</sup>
01020.05	LOA x beam x draft	: ±12.85 x 4.30 x 1.20 m. (single engine version) : ± 12.85 x 4.30 x 1.22 m. (twin engine version)
	Length over deck	: ± 12.05 m.
	Length waterline	: ± 10.80 m.
	Minimum air draft	: ± 2.93 m.
	Headroom	: ± 1.97/2.01/1.99 m.
	FC/saloon/AC	
01030.03	CE-classification	: B (sea)
	Number of max. recommended persons	: 10
03040.01	Fuel tank capacity	: ± 750 ltr.
	Water tank capacity	: ±440 ltr.
	Holding tank capacity	: ±300 ltr.
41002.01	Aft cabin with double berth, toilet compartment with washbasin, separate shower compartment and hanging wardrobe	
42002.01	Spacious saloon with L-settee (incl. Easy Sleep Convert System) and spacious U-shaped galley to Starboard. Separate dinette at Port side.	
43002.01	Forward cabin with double berth and cupboards, toilet compartment and separate shower compartment. Guest cabin with 2 single beds with drawer and linen cupboard	





AGENCIJA AG64 d.o.o.

Ul. Jožeta Jame 14,  
1000 Ljubljana, Slovenia

+386 40 238 204

info@ag64.eu

www.ag64.eu

## STANDARD EQUIPMENT

### 1. HULL

#### 1.1 EXTERIOR

- 11015.01 Hull constructed in accordance with the Linssen Yachts SPH® construction method
- 11020.01 Stainless steel foundation for windscreen
- 11025.02 Outside steering position with high-grade "Soft Coat" instrument panels
- 11030.01 Integrated moulded aft deck dodgers
- 11040.02 Integrated deck-boxes, U-shaped aft bench with lockable teak top and gas pressure struts
- 11080.01 Integrated central stern doorto bathing platform

#### 1.2 STAINLESS STEEL

- 12010.01 Polished stainless steel sea rail
- 12020.01 Side entrances with stainless steel entrance chains
- 12030.01 Opening in sea rail at the bow (lockable with stainless steel chain)
- 12050.02 6 x Original Linssen-design stainless steel cleats
- 12055.01 2 x Original Linssen-design stainless steel cleats at the bathing platform
- 12080.01 Stainless steel handrails on saloon deck
- 12120.01 Comfortable solid teak step to bathing platform with elegant railing on Port and SB side
- 12125.01 Teak step in side decks
- 12130.01 Polished stainless steel foldable bathing ladder at bathing platform (incl. solid teak steps with anti-slip profiles)
- 12145.02 Robust, stainless steel coated bathing platform, with solid teak parts (including Heavy Duty Linssen PVC fendering from bathing platform to 1/3 of the hull length)

#### 1.3 TECHNICAL

- 13030.01 Linssen DUAL CROSS engine foundation
- 13040.01 Linssen "FIS" system (patent Floor Integrated System®) for integral protected loop-up of cables and ductings in the engine compartment
- 13061.03 Provisions for sternthruster incl. main power cables
- 13080.03 Provisions for deck-wash pump
- 13110.01 Outside shower at bathing platform, with warm and cold water tap
- 13150.02 Integrated bow fitting with fixed anchor roller and stainless steel anchor holder
- 13240.01 Selfdraining seawaterproof anchor chain container
- 13270.02 Provisions for installation of a Linssen tender lift at bathing platform
- 13280.01 Waterproof speakers for radio at outside steering position

### 2. COATING

#### 2.1 COATING & DECK FINISH

- 21010.01 Linssen 2 component Exterior Coating system
- 21020.01 Saloon and cabin deck in anti-slip coating
- 21030.01 Fore-deck and side decks in anti-slip coating
- 21040.01 Aft deck in anti-slip coating
- 21060.01 Non-toxic antifouling suitable for fresh and salt water (Black colour)
- 21070.01 Additional 2-component easy-to-clean protective coating in engine compartment
- 21090.19 Original Linssen colour scheme:

### 3. ENGINE COMPARTMENT

#### 3.1 TECHNICAL

- 31010.03 Linssen Yachts "hydrolubricated" propeller shaft installation
- 31020.01 Engine/shaft connection through homokinetic coupling and thrust bearing
- 31025.21 Special low noise propeller
- 31032.06 Electric bowthruster Side Power 24V/120 kgf (6,4 kW/ 8,55 HP) incl. 2x 170 Ah maintenance-free batteries
- 31070.05 Electronic engine control at steering position
- 31100.01 Hydraulic steering sytem
- 31096.02 Stainless steel steering wheel with teak rim at steering position
- 31120.01 Emergency steering installation
- 31150.05 Central positioned fuel tank with inspection/cleaning hatch, incl. level indicator(± 750 litres)
- 31160.03 Magnetic level gauge in fuel tank for direct volume indication



AGENCIJA AG64 d.o.o.

Ul. Jožeta Jame 14,  
1000 Ljubljana, Slovenia

+386 40 238 204

info@ag64.eu

www.ag64.eu

- 31170.05 Separate second (1x on engine) fuel filter, with water separator
- 31210.01 Fuel supply cut-off to engine from saloon settee
- 31240.07 Linssen Compartment Controlled Heating with separate day/night function: 1x 5.5kW warm  
air heating for saloon and galley with control in saloon and 1x 5,5kW for FC/day toilet/AC/AC toilet/guest cabin with control in the AC. Lockable outlets in FC, guest cabin and toilet compartments
- 31310.01 Engine room lighting with switch and indicator in switch panel
- 31330.01 Engine compartment hatch, with a ladders next to the engine
- 31700.03 Automatic fire extinguishing in engine compartment
- 31750.01 Linssen super sound insulation package consisting of a sound absorbent insulation and non vibration package.

### 3.2 ON-BOARD WATER SYSTEMS

- 32010.02 Automatic pressurized water system (incl. solid PVC water tank with inspection/cleaning hatch ( $\pm$  440 litres), incl. analogue level indicator in switch panel)
- 32020.01 2 Automatic pumps including expansion reservoir for water system
- 32050.04 Hot water system (60 litre calorifier)
- 32060.01 230 V./800W immersion heater in calorifier
- 32080.03 Holding tank toilet including Dockside-Discharge connection and level indicator( $\pm$  300 litres)
- 32095.01 All grey water outlets (sinks and shower-drainage) discharge directly overboard  
Drain pump(s) shower(s) finished with time relay
- 32110.02 Holding tank waste pump-out unit for Direct Discharge
- 32180.02 Electric bilge pump installation in engine compartment, with float switch for alarm.  
Manually switched. Bilge pump capacity: 100L/min.
- 32200.01 Additional loose electric bilge pump provided, with discharge tube and supply cable

### 3.3 ELECTRICAL & ELECTRONICS

- 33022.01 Linssen Yachts ICCCESS main switchboards, 1x in saloon and 1x at steering position, for control of key functions and reading of fluid levels
- 33030.01 230V. /16Amp shore power connection with fuses and shore power cable (25 metres)
- 33050.21 Shore power connection equipped with galvanic insulator for an optimal separation between domestic & shore power
- 33082.03 Domestic: 12V. with 3 maintenance free "Super Cycle" AGM-batteries 170 Ah.
- 33180.01 Starting circuit 12V. with 1 x maintenance free "Super Cycle" AGM-battery 170 Ah.
- 33230.03 Additional battery charger for bow and sternthruster group
- 33271.03 Automatic battery charger/inverter type Victron Quattro 12/3000 with battery monitor.  
The battery charger has a maximum charging current of 120A, the maximum output power of the inverter is 3000W.

### 3.4 INSTRUMENTS & NAVIGATION

- 34010.21 Engine instrument panel with rev.counter, voltmeter with alarm, temperature gauge with alarm, oil pressure gauge with alarm, ignition key and engine hour meter
- 34030.02 Compressor horn with control at steering position
- 34050.02 Government approved LED navigation lights:Starboard and Port side on superstructure
- 34070.01 stern light, top light in mast and anchor light Spare wiring for compass/windset

#### 3.4.1 NAVIGATION INSTRUMENTS

- 34080.14 Raymarine i70S multifunction instrument with read out from echosounder, log and outside water temperature at steering position

### 3.5 EXTERIOR EQUIPMENT HULL

- 35010.00 Magnesium or zinc anodes (depending on cruising area)
- 35030.01 Original Linssen synthetic-fibre rope fender, with stainless steel stretcher (Beige colour)
- 35040.01 Ships name on bow and stern. Port of Registry and Registration number on stern in colour of the waterline  
Bow letter type; Snell Roundhand. Stern letter type; VAG
- 35081.23 Manual anchor winch with integrated Heavy Duty stainless steel anchor roller and Linssen patented anchor rail. Including 30m 8mm. anchorchain and 20 kg. Bruce anchor



AGENCIJA AG64 d.o.o.

📍 Ul. Jožeta Jame 14,  
1000 Ljubljana, Slovenia  
☎ +386 40 238 204  
✉ info@ag64.eu  
🌐 www.ag64.eu

### 3.7 EXTERIOR EQUIPMENT SUPERSTRUCTURE

- 37010.03 Robust windscreen wiper installation windscreen (3x)
- 37040.03 Window spray-installation windscreen for three wipers including wish-wash function
- 37070.04 Original Linssen Design mast, with double yard, powder coated in superstructure colour
- 37075.02 Stainless steel mast stays with quick release system
- 37110.07 Helm-seat in imitation Sand beige leather, on stainless steel adjustable support.
- 37180.01 Stainless steel Linssen Grand Sturdy logo
- 37245.01 Teak deck box joint table model
- 37261.02 Teak sliding hatch
- 37271.11 entrance door, varnished in superstructure colour

### 3.8 WINDOWS

- 38010.01 All windows to saloon in powder coated aluminium profiles, incl. toughened "Summer Green" tinted glass
- 38040.02 Hinged Starboard window in forward saloon, with "summer green" tinted glass
- 38070.02 Sliding window in saloon at Port side, with "Summer Green" tinted glass
- 38300.06 6 x opening port-holes in the forward cabin, with plain acrylate
- 38320.01 6 x opening port-holes in the aft cabin, with plain acrylate
- 38400.01 Powder coated aluminium ventilation/escape hatch, with "Summer Green" tinted glass in the forward cabin
- 38410.01 Powder coated aluminium ventilation/escape hatch, with "Summer Green" tinted glass in guest cabin and head
- 38420.01 Aluminium ventilation/escape hatch, with "Summer Green" tinted glass in aft cabin
- 38430.01 5-part aluminium windscreen with powder coated profiles, with "Summer Green" tinted/toughened glass fitted on coated stainless steel foundation

## 4. INTERIOR GENERAL

- 40010.01 Linssen panels FPS®(Floating Panel System, Patented)
- 40020.03 Interior constructed of high-end okoume panelling with cherry finish
- 40030.02 Deck-head lining in elegant vinyl finish panels
- 40040.01 Original Linssen maintenance friendly ship's floor, wenge color. Hatches in aisle to FC finished with hinges
- 40050.02 High gloss stainless steel fittings in all compartments
- 40060.02 High gloss stainless steel door and locker furniture, with push-button catches

### 4.1 AFT CABIN

- 41021.01 Double berth, with slatted base and sprung mattress including spacious drawers underneath bed
- 41031.01 Bedside table at Port side
- 41041.01 Bedside table at Starboard side
- 41101.01 Spacious hanging locker on Port side
- 41051.01 Soft paneling AC against transom
- 41412.01 Soft paneling AC at SB side

### 4.1.2 SHOWER AND HEADS COMPARTMENTS

- 41062.01 Toilet compartment in the aft cabin in HPL finish
- 41071.02 Washbasin in aft toilet-compartment, built into vanity unit. Worktop and wash basin in toilet compartment finished in original Corian® "Clamshell"
- 41092.01 Shower in the AC finished in HPL finish
- 41092.91 Shower trays in corian type Clamshell designed with grooves for water drainage, without skirting boards

### 4.2 SALOON & GALLEY

- 42021.01 Comfortable saloon settee with "Easy Sleep Convert System", double-bed function with integrated storage space
- 42035.03 Elegant saloon table, low model
- 42041.01 Grab rail at saloon stairs, in high gloss stainless steel
- 42071.01 Dinette in saloon with integrated storage space
- 42081.01 U-Shaped galley with cupboards and drawers
- 42092.01 U-shaped galley worktop finished with original Corian®"Clamshell"
- 42099.99 Additional work surface in the galley through cherry wood folding part next to hob
- 42141.01 Functional storage space in forward section with automatic light switch
- 42414.01 Wall panels in saloon SB, Port and front in cream white HPL.



AGENCIJA AG64 d.o.o.

📍 Ul. Jožeta Jame 14,  
1000 Ljubljana, Slovenia  
☎ +386 40 238 204  
✉ info@ag64.eu  
🌐 www.ag64.eu

#### 4.3.1 FRONT CABIN AND GUEST CABIN

- 43021.01 Double berth with slatted base and 2 drawers
- 43031.01 Combined hanging-locker/linen-cupboard on Port side
- 43041.02 Spacious linen cupboard on Starboard side
- 43101.01 Two single berths in the guest cabin, incl. drawer under Stbd berth
- 43121.01 Spacious linen cupboard in guest cabin
- 43111.01 Cupboard between the berths in guest cabin
- 43412.02 Soft paneling FC, longitudinal SB/Port (4 panels)

#### 4.3.2 SHOWER AND HEADS COMPARTMENTS

- 43062.01 Toilet/shower walls FC in HPL finish
- 43071.02 Washbasin in front toilet-compartment, built into vanity unit. Worktop and wash basin in toilet compartment finished in original Corian® "Clamshell"
- 43082.01 Shower in the FC finished in HPL finish
- 43082.91 Shower trays in corian type Clamshell designed with grooves for water drainage, without skirting boards
- 43081.11 Storage space in the shower FC, suitable for subsequently fitting of washer/dryer

### 5. FINISH

#### 5.1 LIGHTING & SOCKETS

- 51010.05 LED dimmed interior light fittings in all compartments, with light switches
- 51070.11 Luxurious LED reading lights {2x} in the aft cabin
- 51110.05 Indirect lighting in step to galley
- 51400.01 1x USB socket in the saloon for charging mobil equipment. No data transfer.
- 51500.00 1 x 12 V. socket at dinette in saloon
- 51607.01 230V sockets in the aft cabin {1x}, aft cabin toilet {1x}, forward cabin {1x}, forward cabin toilet {1x}, dinette {1x} and galley {1x double}

#### 5.2 GALLEY

- 52015.01 Bar cupboard/drawer in saloon, incl. set of Linssen Yachts glasses (comprising: 6 shot glasses, 6 highball glasses, 5 whisky glasses and 6 wine glasses)
- 52020.01 Integrated waste bucket in cupboard
- 52025.01 Anti-skid mats in galley drawers
- 52030.01 Cutlery tray
- 52040.02 110 l. refrigerator with freezer compartment in the galley
- 52105.02 Gas installation with Campingaz gas bottle (3kg), in container at bathing platform
- 52110.02 3-burner stainless steel gas hob
- 52120.02 Glass coverplate for 3-burner gas hob
- 52180.01 Stainless steel sink
- 53020.03 Mixer tap in galley type Grohe Essence

#### 5.3 SANITARY FITTINGS

- 53010.01 Selected bathroom fittings (mirror, toilet paper holder, etc.), in the forward cabin head
- 53015.01 Selected bathroom fittings (mirror, toilet paper holder, etc.), in the aft cabin
- 53030.03 Wash-basin mixer tap in toilet compartment FC type Grohe Essence
- 53040.03 Wash-basin mixer tap in toilet compartment AC type Grohe Essence
- 53050.04 Shower mixer tap in forward shower type Grohe IO00C (Thermostatically adjustable) incl. shower rail
- 53060.04 Shower mixer tap in aft shower type Grohe IO00C (Thermostatically adjustable) incl. shower rail
- 53070.01 Shower curtain in aft cabin shower
- 53130.02 Electric toilet in forward cabin, with fresh water rinsing
- 53140.02 Electrical toilet in the aft cabin, with fresh water rinsing

#### 5.4 AUDIO/ VIDEO

- 54010.02 Stereo radio/MP3-player Fusion RA70N with bluetooth including 2 speakers in the saloon and FM radio antenna in mast.  
Audio streaming possible  
Operation possible via the App FUSION link DAB+ ready  
AM/FM including RDS Amplifier Class-AB 4x SOW



AGENCIJA AG64 d.o.o.

📍 Ul. Jožeta Jame 14,  
1000 Ljubljana, Slovenia  
☎ +386 40 238 204  
✉ info@ag64.eu  
🌐 www.ag64.eu

## 5.6 INTERIOR UPHOLSTERY

- 56021.02 Dinette settees, finished in genuine leather, cream colour
- 56031.02 L-shaped saloon settee, finished in genuine leather, cream colour
- 56101.11 Mattress lx 2 pers. in front cabin type coldfoam 14 cm. with layer in foam in two hardness grades.
- 56131.11 Mattress lx 2 pers. in aft cabin type coldfoam 14 cm. with layer in foam in two hardness grades
- 56161.01 Mattress 2x single person in guest cabin type coldfoam 10 cm. with layer in foam in two hardness grades.
- 56300.01 Luxurious curtains for windows and hatches saloon, FC and AC, cream colour

## 5.7 EXTERIOR UPHOLSTERY

- 57015.03 Cushions for aft deck U-settee in imitation leather, sand beige.

## 5.8 EQUIPMENT

- 58010.01 Spares kit including tool-kit, impeller, fuses, paint-tips and various maintenance parts
- 58020.01 Complete inventory including 6 fenders, 4 mooring ropes (10 meters), boathook, life buoy, bucket, scrubbing brush, national flag, yard ribbon, safety rope for anchor chain and anchor ball
- 58030.01 First-aid box in saloon according to DIN13157
- 58040.01 ABC fire class compliant fire extinguishers (2 x 2 kg): lx in saloon settee, lx in "cellar"
- 58045.01 Optical smoke detector with fixed built-in lithium battery (life span 10 years) in all sleeping compartments.

## 5.9 CANVAS & COVERS

- 59030.01 Cabrio closed model over the complete aft deck, Sunbrella Dune. The side- and back parts can be opened by a zip-fastener.
- 59130.01 Cover for steering console Sunbrella Dune

# OPTIONAL EQUIPMENT

## 1. HULL

- 13070.03 Provisions for simple installation of Magnus Master stabilization system to prevent rolling of the ship. 1 mounting flange welded portside in the hull in the aft cabin in the walk-in closet.
- 13290.01 Heating (blower) at the outside steering position by means of heat exchanger connected to the engine. Equipped with 4x blowers {2x against windscreen windows, 2x under the steering position). The heat exchanger is mounted in the saloon settee including an extra expansion tank for the engine cooling.

## 2. COATING

- 22020.01 Original LINSSEN teak deck on aft deck, steps on transom and ventilation-/escape hatch

## 3. ENGINE COMPARTMENT

- 31130.06 "Magnus Master" stabilization system (electric, 230V) to prevent rolling. One stabilizer. Position in Port wardrobe aft cabin. Attention: System is connected to generator set and therefore only applicable in combination with generator Only in combination with position(s):
- 34170.12 Raymarine CPT-110 THROUGH HULL TRANSDUCER Downvision integrated on multifunctional display Raymarine
- 35092.32 Electric anchor winch 1200W/24V. mounted above deck with integrated stainless steel anchor rollers and anchor rail with 50m. 10 mm. anchor chain and 20 Kg. Bruce-anchor.
- 37080.08 Electric mast lowering system, incl. control at steering position. Not possible in combination with position(s): 37070.06
- 37230.01 Luxury teak table incl. joint (outside)
- 31032.26 Bowthruuster finished with proportional control. Stepless control of bowthruuster (in combination with proportional stern thruuster with parking position on every performance). Including control panel with integrated LCD display for feedback of battery capacity, (rest)



**AGENCIJA AG64 d.o.o.**

📍 Ul. Jožeta Jame 14,  
1000 Ljubljana, Slovenia  
☎ +386 40 238 204  
✉ info@ag64.eu  
🌐 www.ag64.eu

- functioning time, temperature and system warnings.
- 31053.25 Electric stern thruster Side Power 24V/100 Kgf (6,3 kW/8,4 HP) incl. 2x super cycle 170Ah maintenance-free AGM battery finished with proportional control. Stepless control with parking position on every performance. Including control panel with integrated LCD display for feedback of battery capacity, (rest) functioning time, temperature and system warnings.
- 33290.13 Northern Lights 230V/7 KW, type M773LW3G generator. Intercooling, continuous power, integrated in shore power connection. Incl. water/gas separator for exhaust generator. To control with a control panel with operating hours.
- 31501.01 Chiller air conditioning throughout the ship by compressor with soft start, total capacity of 20.000 BTU. Saloon only.
- 34145.11 Raymarine CAM220 IP day & night net dome video camera on transom for rear view with readout on multifunctional Raymarine display
- 36040.01 Stainless steel snap davit system, with universal tender fastening.
- 36100.01 Outboard engine fastening bracket against stern (Max. 8 HP)
- 34110.13 Raymarine Smart Controller wireless autopilot remote control
- 34140.03 Navionics Gold XL9 marine chart type 46XG, West Europe
- 34160.05 Raymarine Quantum 2 (Doppler) CHIRP radar antenna, on the mast
- 34190.07 Raymarine Ray260 VHF with Class D "Digital Selective Calling" (DSC) at steering position including antenna in Mast
- 34943.04 AIS 700 transponder/receiver (Automatic Identification System) integrated on radar/chartplotter display. Attention: MMSI-number required. Attention: Only in combination with VHF installation
- 36040.01 Stainless steel snap davit system, with universal tender fastening.

#### **4. INTERIOR**

- 42033.01 Low coffee table model, pouf / tray combination. Not possible in combination with position(s): Saloon table low

#### **5. FINISH**

- 51700.11 Additional 230 V. socket at steering position, SB side splash resistant
- 52100.02 230V. washer/dryer combination, fitted in the forward cabin shower compartment
- 52031.02 High gloss polished stainless steel towel rail at refrigerator door
- 52140.02 230V. induction hob, stainless steel, with touch control. 1 x 1200 W. cooking zone, 2 x 1800 W. cooking zone, 1 x 2200 W. cooking zone
- 52220.02 230V. stainless steel 42 l. microwave/oven/grill combination. Temperature range 30-250 degrees. 90-1000W microwave power. Fitted in the galley next to the sink.
- 53140.03 Electrical toilet in the aft cabin, with sea water rinsing
- 53010.90 Full-length mirror in the FC toilet compartment at entrance door to the front cabin
- 53130.03 Electric toilet in forward cabin, with sea water rinsing
- 55010.01 Mosquito screen in forward Starboard hinged saloon window
- 55030.01 Integrated mosquito screen in Port sliding saloon window
- 55040.01 Integrated mosquito screen in Stbd sliding saloon window
- 55090.01 Rain protection covers and mosquito screens for the forward cabin port-holes
- 55110.01 Rain protection covers and mosquito screens for the aft cabin port-holes (6x)
- 55155.01 Mosquito screen for sliding hatch at the entrance door (with magnets)
- 56031.90 Additional back cushions saloon settee against the galley
- 58022.02 2x ball fender 065cm black with rope
- 58050.02 Safe A4 size, with combination lock, in the cabinet middle cabin (Inside dimensions:

hxwd=227x357x300mm)

- 58075.02 Removable clothes rail in shower compartment front cabin
- 58080.01 8 hooks at various positions in the yacht. Positions to be determined during the hand over. Fitted during the 25-hours inspection.
- 58100.01 2 high gloss polished stainless steel support next to the mast for bicycles parking
- 59200.12 Sun cover around saloon windows finished in screen cloth (excluding entrance door/window) incl. mounting, colour white







➤ PRESTIGE®

AGENCIJA AG64 d.o.o.

📍 Ul. Jožeta Jame 14,  
1000 Ljubljana, Slovenia

☎ +386 40 238 204

✉ info@ag64.eu

🌐 www.ag64.eu





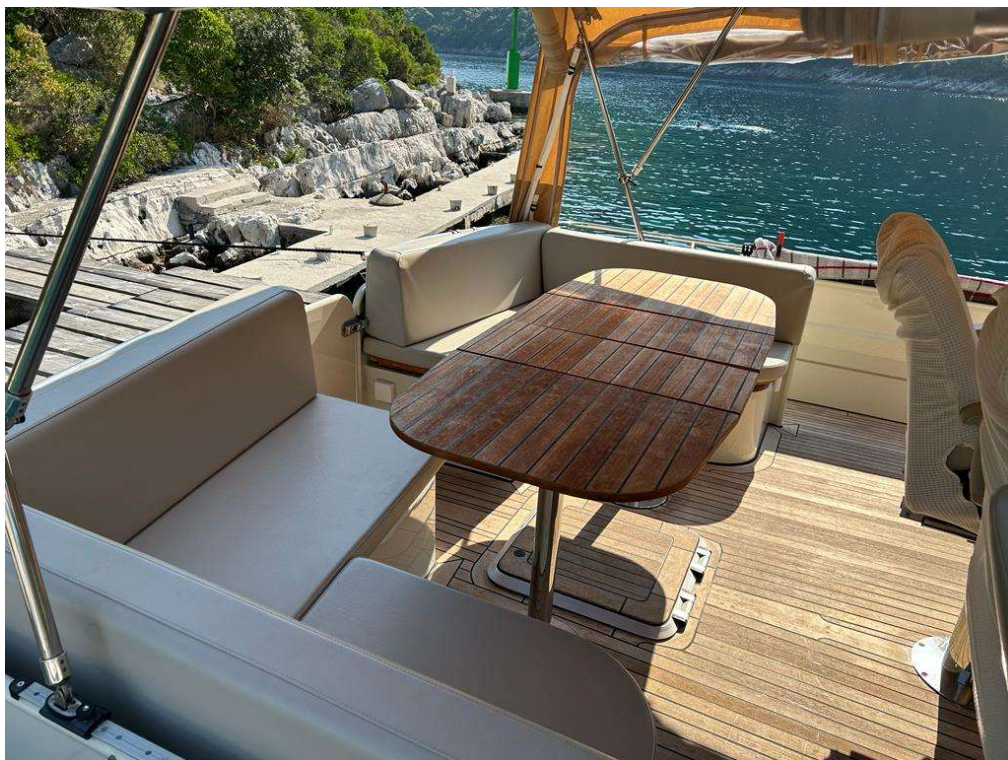
**AGENCIJA AG64 d.o.o.**

📍 Ul. Jožeta Jame 14,  
1000 Ljubljana, Slovenia

☎ +386 40 238 204

✉ info@ag64.eu

🌐 www.ag64.eu





PRESTIGE®

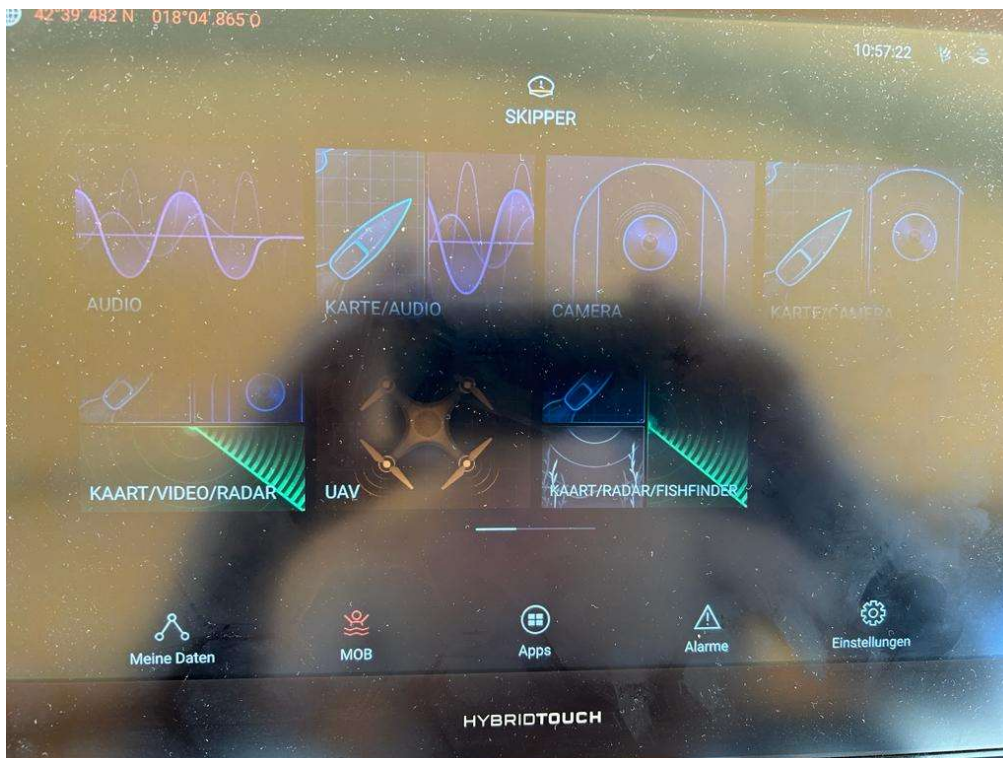
AGENCIJA AG64 d.o.o.

Ul. Jožeta Jame 14,  
1000 Ljubljana, Slovenia

+386 40 238 204

info@ag64.eu

www.ag64.eu







AGENCIJA AG64 d.o.o.

📍 Ul. Jožeta Jame 14,  
1000 Ljubljana, Slovenia

☎ +386 40 238 204

✉ info@ag64.eu

🌐 www.ag64.eu





AGENCIJA AG64 d.o.o.

📍 Ul. Jožeta Jame 14,  
1000 Ljubljana, Slovenia

☎ +386 40 238 204

✉ info@ag64.eu

🌐 www.ag64.eu





AGENCIJA AG64 d.o.o.

📍 Ul. Jožeta Jame 14,  
1000 Ljubljana, Slovenia

☎ +386 40 238 204

✉ info@ag64.eu

🌐 www.ag64.eu





**AGENCIJA AG64 d.o.o.**

📍 Ul. Jožeta Jame 14,  
1000 Ljubljana, Slovenia

☎ +386 40 238 204

✉ info@ag64.eu

🌐 www.ag64.eu







**AGENCIJA AG64 d.o.o.**

📍 Ul. Jožeta Jame 14,  
1000 Ljubljana, Slovenia

☎ +386 40 238 204

✉ info@ag64.eu

🌐 www.ag64.eu





AGENCIJA AG64 d.o.o.

📍 Ul. Jožeta Jame 14,  
1000 Ljubljana, Slovenia

☎ +386 40 238 204

✉ info@ag64.eu

🌐 www.ag64.eu





